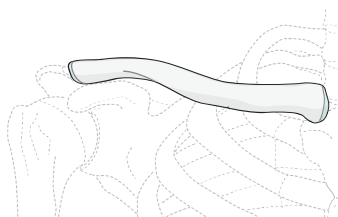


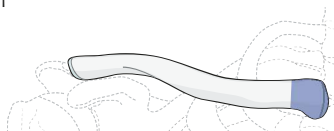
Clavicle

Bone: Clavicle 15



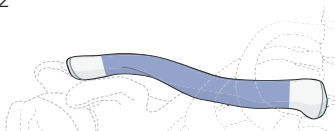
Locations:

Clavicle, **proximal (medial) end segment**
15.1



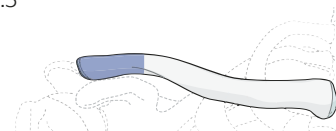
Location is determined by a square with sides the length of the widest portion of the medial end of the clavicle.

Clavicle, **diaphyseal segment**
15.2



The portion between the two end segments.

Clavicle, **distal (lateral) end segment**
15.3



Begins at line perpendicular to the medial edge of the coracoid process. The coracoclavicular ligaments are part of this lateral end segment.

Location: Clavicle, **proximal (medial) end segment** 15.1

Types:

Clavicle, proximal (medial) end segment, **extraarticular fracture including epiphyseal plate injury**
15.1A



Clavicle, proximal (medial) end segment, **partial articular fracture**
15.1B



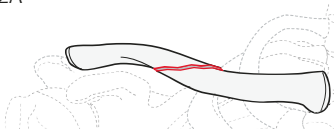
Clavicle, proximal (medial) end segment, **complete articular fracture**
15.1C



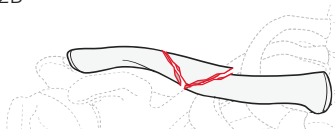
Location: Clavicle, **diaphyseal segment** 15.2

Types:

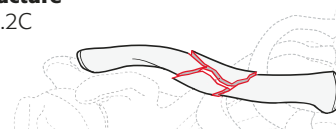
Clavicle, diaphyseal, **simple fracture**
15.2A



Clavicle, diaphyseal, **wedge fracture**
15.2B



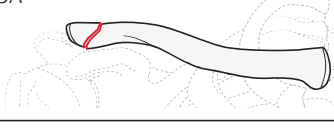
Clavicle, diaphyseal, **multifragmentary fracture**
15.2C



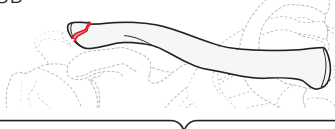
Location: Clavicle, **distal (lateral) end segment** 15.3

Types:

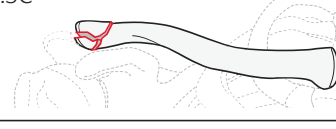
Clavicle, distal (lateral) end segment, **extraarticular fracture**
15.3A*



Clavicle, distal (lateral) end segment, **partial articular fracture**
15.3B*



Clavicle, distal (lateral) end segment, **complete articular fracture**
15.3C*



*Qualifications:

- a CC ligament complex intact
- b CC ligament complex, partial disruption
- c CC ligament complex, complete disruption

Qualifications are optional and applied to the fracture code where the asterisk is located as a lower-case letter within rounded brackets. More than one qualification can be applied for a given fracture classification, separated by a comma. For a more detailed explanation, see the compendium introduction.